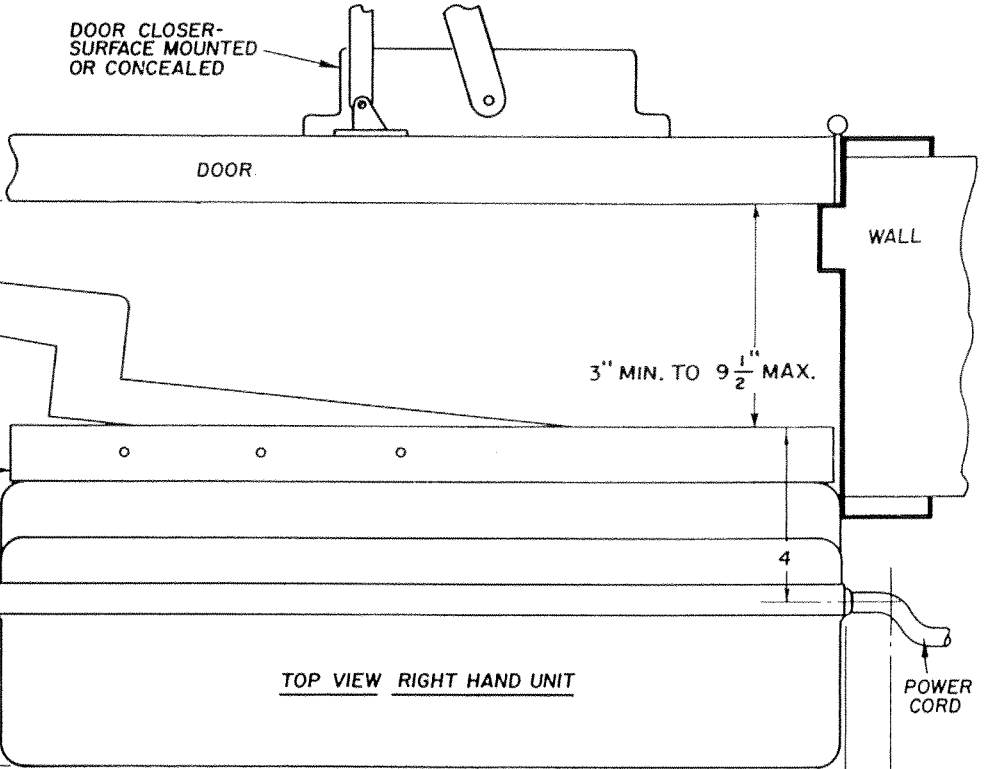


ROLLER SCUFF PLATE

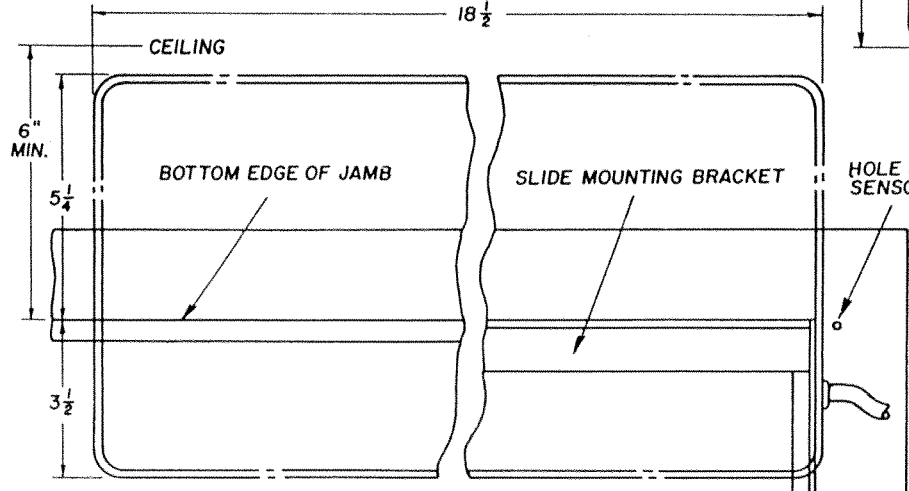
* LOCATE AFTER UNIT HAS BEEN INSTALLED

MODEL 4300
FOR DEEP REVEAL DOORS

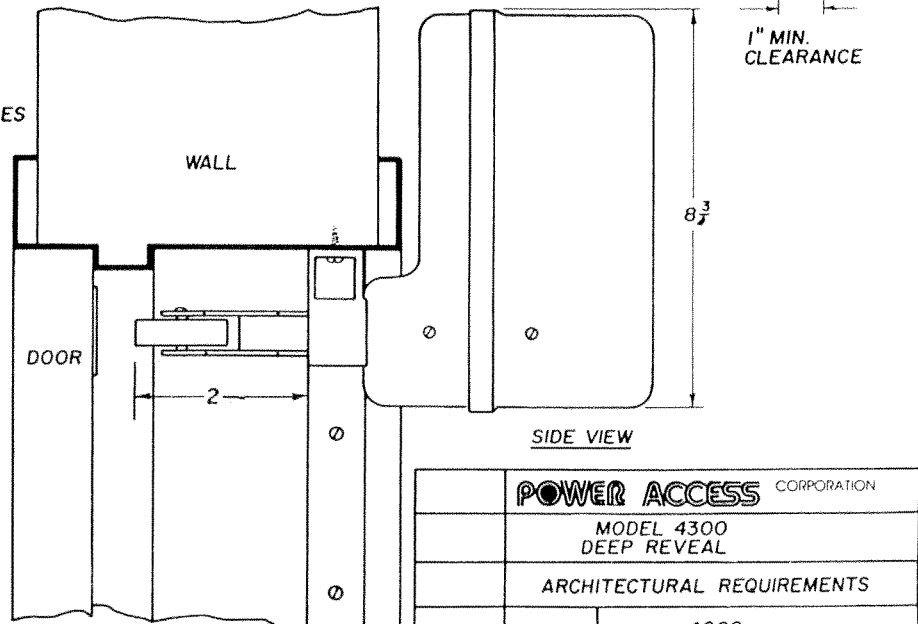
POWER REQUIREMENTS - 115 VAC, 3 AMP, SINGLE PHASE
GROUND RECEPTACLE, 9 FT. POWER CORD SUPPLIED.
SENSORS - TOUCH SWITCHES, WALL SWITCHES OR
RADIO CONTROL AS SPECIFIED.
BLANK LATCH STRIKE PLATE SUPPLIED.



TOP VIEW RIGHT HAND UNIT



FRONT VIEW RIGHT HAND UNIT



SIDE VIEW

POWER ACCESS CORPORATION	
MODEL 4300 DEEP REVEAL	
ARCHITECTURAL REQUIREMENTS	
3/91	4260